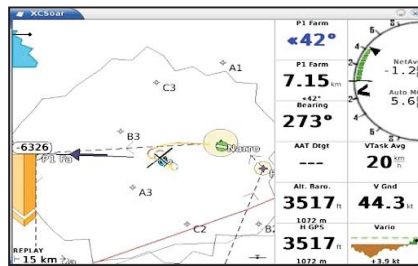
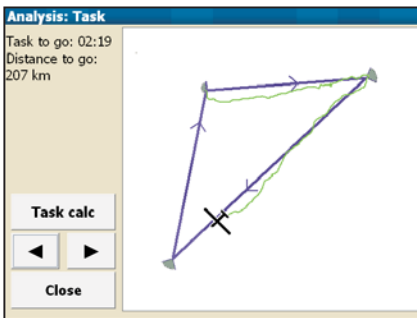
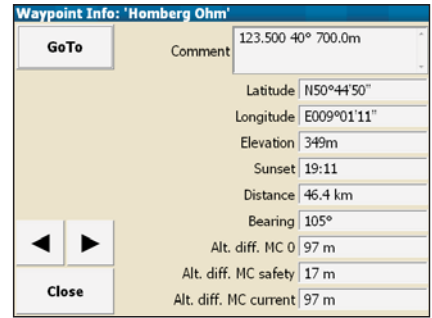
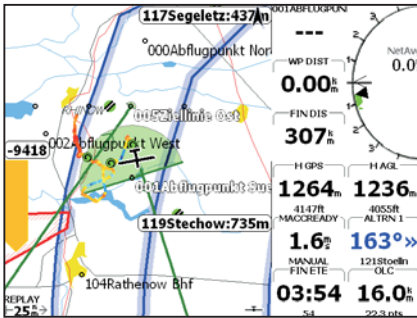


# GPS Navigation for Sailplanes with XCSoar

Winpilot was initially designed to run on Windows CE based devices like iPaq's or PDA's but is now also available for some mobile phone platforms. The system on offer here is based on the dependable HP iPaq Model HX4700.

XCSoar  
PDA  
Cradle  
Charger  
Connectivity  
**Price**

Version 6:7:2  
Hewlett Packard HX4700  
Suction pad cradle for iPaq and GPS receiver  
One each for the HX4700 and Navman GPS Receiver  
Bluetooth  
**R3200.00**



## Features

- Turnpoint arrow & bearing line allows for easy navigation & eliminates head in cockpit flying
- Assigned Area Tasks easy to program & edit in flight with task time remaining displayed
- Task start automatically triggered by the glider going across the defined start line
- Individual displays of various flight features set up to user preferences
- Reachable airfields displayed also indicating excess arrival height
- Wind speed & direction indicated next to the glider display
- Various glider polar curves are available or edit your own
- Task editor easy to use & allows for in-flight task editing
- Auto zoom of turnpoints and auto go-to next turnpoint
- McCreeedy setting easily changed, or set to automatic
- Final Glide and or total task height displayed
- Go-to nearest landable airfield function
- Airspace clearly highlighted

[www.aceaviation.co.za](http://www.aceaviation.co.za)



Contact Alan on: [alan@aceaviation.co.za](mailto:alan@aceaviation.co.za) for more details